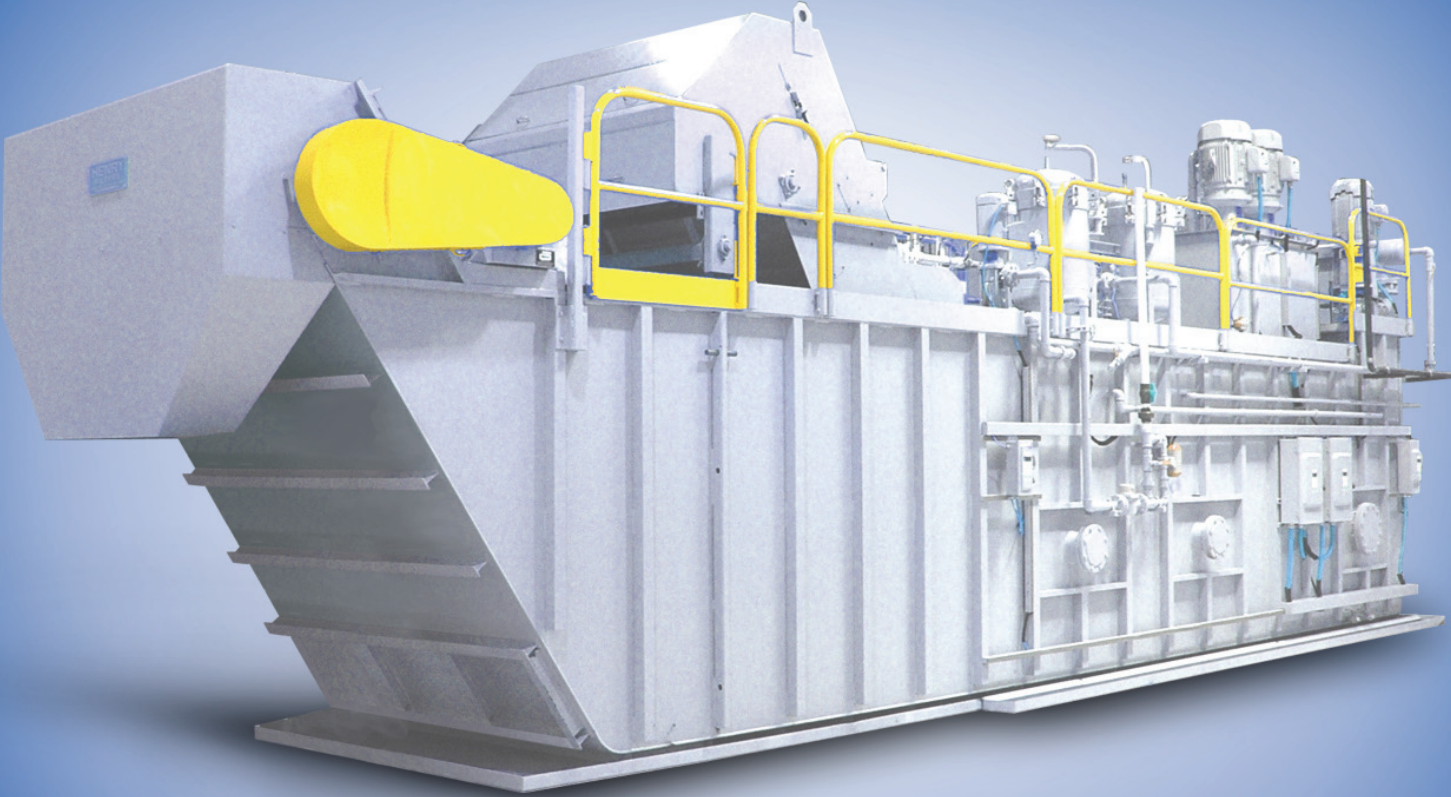


SealTrack™ Endless Belt

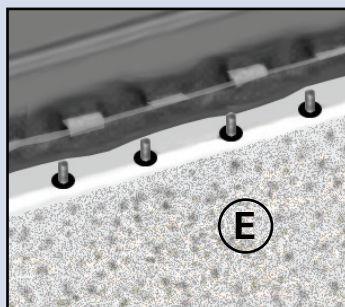
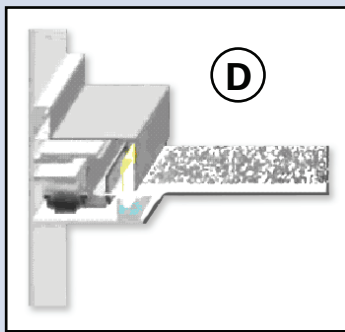
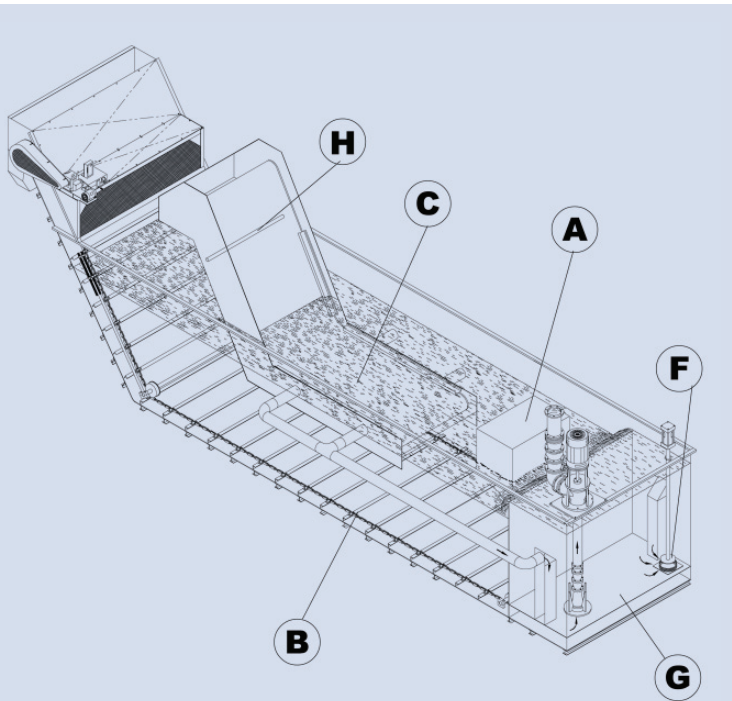


Ecoclean STEB



Ecoclean

High-clarity filtration



- A Filter tank inlet box**
- B Chip drag**
- C Filter belt**
- D Filter media**
- E Filter belt on patented conveyor attachment**
- F Vacuum break valve**
- G Clean tank**
- H Washer header**

Media is sealed even while indexing

Technology

The Ecoclean SealTrack™ Endless Belt filter system (STEB) provides high-clarity filtration for machining and grinding operations. Patented SealTrack™ endless belt technology creates a continuous positive seal around the filter belt, preventing migration under vacuum pressure. The seal is maintained even when the filter media is indexed. STEB's continuous positive seal is proven and reliable: no backup filtration is required because chips virtually cannot bypass around the STEB's side seal.

Process

Vacuum suction removes small contaminants from the machine coolant. A vacuum pump draws contaminated coolant through the filter belt screen or disposable media. As the filter operates, fine particles and chips collect on the surface, forming a filter cake, increasing the performance of the filter process. When the filter cake becomes too dense or restrictive to fluid flow as sensed by vacuum differential, the filter belt or media is indexed. STEB side seal prevents contaminants from migrating around the belt during vacuum suction and belt or media indexing.

System benefits

Continuous filtration

A drag conveyor that spans the full width of the tank is included for removing settled contaminants from the machine coolant. The drag conveyor cycles independently of the filter belt, allowing the drag conveyor to cycle continuously or intermittently to pull out chips and swarf that have fallen to the bottom of the filter tank. Therefore the grad can operate intermittently to discharge the driest sludge and cause the least wear, or continuously for heavy chip-load conditions.



Low-maintenance STEB requires no special tools for basic belt and screen installation

Media options

The base model STEB can operate with a permanent filter belt or with disposable media. Using permanent media reduces environmental complications associated with landfill disposal, and is less costly to maintain. When finer filtration is required, disposable media can be introduced to improve filter clarity and to remove excessive tramp oil from the machine coolant. The STEB unit is designed to cycle automatically, virtually maintenance-free. The endless belt is easy to install onto the STEB's special tracking-drive mechanism. A typical filter unit belt takes under 30 minutes to install.



Capacity	
Flowrate	200 - 10,000 GPM
Filtration area	58 - 500 SF per unit

Applications	
Filtration of water and oil based coolants – machining, grinding, lapping, honing, polishing	
Stamping operations	
Phosphate system filters	
Parts washer filters	
Waste Water	

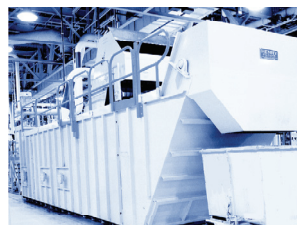
Media Options	
Disposable media	For removal of small fines as found in rough machining, grinding, honing, polishing
Permanent media	For removal of larger fines, reduces costs associated with replacement and disposal of disposable medias

SealTrack™ Endless Belt

- Endless belt continuous filtration with the option of disposable media
- Patented positive mechanical seal on belt or paper media virtually eliminates migration even while indexing
- Full-width, independent drag conveyor handles heavy chip loads
- No risk of media cutting, tearing or wearing because conveyor does not ride on belt/paper
- No manual fastening of belt for ease of installation/removal
- Shorter belt length saves cost and replacement time
- In-tank belt return minimizes belt length and drying which can shorten belt life
- In-tank belt wash station eliminates floor leaks/drips
- Quiescent belt wash area is ideal for removal of fines
- No special tools required for basic belt and screen installation

Dürr Ecoclean · www.durr-ecoclean.com

STEB



Ecoclean