



LEADING IN PRODUCTION EFFICIENCY

# FAStplant®

SYSTEMS FOR SUCCESS





# FAStplant® – THE MODULAR FACTORY

Dürr represents worldwide success and stands for technological leadership in the field of final assembly.



» Preassembled modules reduce the build-up time

**FAStplant®**, a modular final assembly system with simple and flexible build-up and retrofitting options is convincing proof. Low capital investment and a holistic modular design concept make this system highly attractive.

## Tried and proven innovation

The standardized modules with integrated media, energy and data connections allow a complete new line build-up – and are cost-effective in a simple factory building by reducing the construction time by 30%. **FAStplant®** has already demonstrated this with successful projects on four continents. The pretested and preassembled modules also significantly reduce the start-up time for the system.



# FAStplant® – CUSTOMIZED FOR YOUR ASSEMBLY

## Flexible

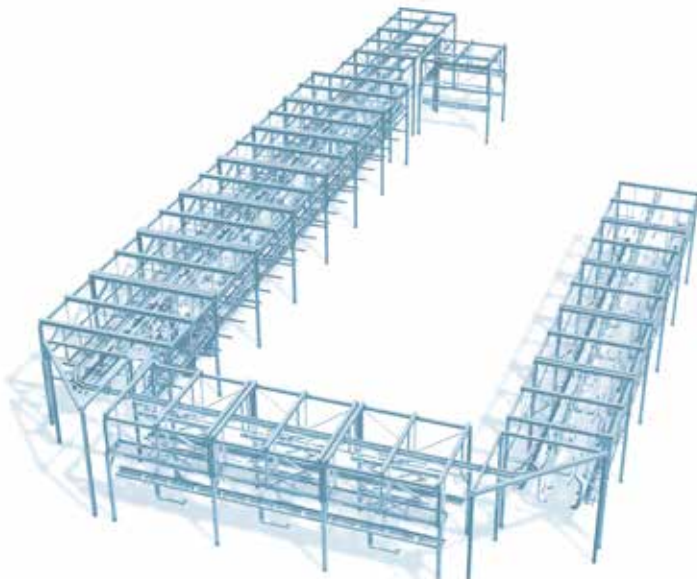
The use of standard modules not only simplifies the planning processes and the system build-up. **FAStplant®** also allows rapid adaptation for higher production capacities and new models with a unit cost reduction of more than 3%.

## Process-oriented

**FAStplant®** stands for simplified line management that integrates all final assembly work processes from body marriage to filling. With **FAStplant®**, it is also possible to position function tests and alignments from the end-of-line area in the assembly line. The automation level of the line can be flexibly expanded at any time even in completely built systems.

## Extensive applications

**FAStplant®** is suitable for newly built factories as well as for upgrades to existing systems. In the area of SKD/CKD systems and pilot lines, **FAStplant®** offers the ideal basis for further growth, rapid disassembly, transport and reconstruction at another location.



» *Height-adjustable suspension for optimum ergonomics*



## FAStplant® – for the distinct edge

- » Build-up times reduced by 30% thanks to pretested and preassembled modules
- » Reduction of costs per unit by more than 3%
- » Versatile in application for series production, SKD/CKD plants and pilot lines by means of flexible build-up and retrofitting of assembly lines
- » Flexible expansion of the automation level in the finished system
- » Easy adaptable to new vehicle models or model variants
- » High system availability through simple and robust system technology
- » No dependence on the building
- » Already in use on four continents



LEADING IN PRODUCTION EFFICIENCY

## Dürr – Leading in Production Efficiency

Five divisions, one goal: maximum production efficiency for our customers

- » **Paint and Final Assembly Systems:** paint shops and final assembly systems for the automotive industry
- » **Application Technology:** robot technologies for the automatic application of paint as well as sealants and adhesives
- » **Clean Technology Systems:** exhaust-air purification systems and energy-efficiency technology
- » **Measuring and Process Systems:** balancing systems as well as assembly, testing and filling technology
- » **Woodworking Machinery and Systems:** machinery and systems for the woodworking industry