

LEADING IN
PRODUCTION
EFFICIENCY

www.durr.com

A close-up photograph of a white industrial robot arm with multiple fingers, positioned above a blue car body. The robot arm is holding a spray gun, and a fine mist of paint is visible at the nozzle. The background is dark and out of focus.

Experience customized paint process solutions

Application Test Center

Southfield, MI

Sustainable solutions from practical testing

At our 18,000 sq ft test center in Southfield Michigan, customers can experience the latest Dürr products and technologies live and on their own products. Using state-of-the-art equipment, knowledgeable personnel and in collaboration with paint manufacturers, our customers develop and test innovative paint process concepts pushing the envelope in application.

You benefit from hands-on experience with the latest processes and technologies. Our specialists combine your product requirements with Dürr solutions to design and refine processes. This coordination of a thoroughly customized system and an optimized process ensures successful production results. Environmentally friendly processes can also be verified before equipment purchase.

BENEFITS OF USING OUR SOUTHFIELD, MI PAINT APPLICATION TEST CENTER

Advanced testing capabilities:

- Environmentally controlled temperature and humidity
- New materials launch and/or product testing
- Drive color and appearance standards and accelerate color validation
- Test full layering systems, including 3 wet
- Gun and Bell application processes
- Application trials on actual products
- Flexibility to meet diverse customer requirements
- Waterborne and solventborne capable
- Multiple ovens to duplicate flash and bake requirements

- Customizable testing for full-bodies or panels, tailored to meet customer needs
- Process validation in our facility without impacting production schedules
- DOE development
- Documentation and reports
- Gun applicator testing for robotic and manual spray

Benefits of trials:

- Improved paint quality
- Increased transfer efficiency
- Reduced booth cleaning
- Reduced paint usage
- Reduced cycle times
- Perform trials that cannot be done during production
- Increased First-Time-Through (FTT)

Environmental and production efficiency:

- Introduction to environmentally friendly processes before purchase
- Transfer efficiency testing
- EPA testing
- Color change paint and solvent loss

Testing equipment:

- Rheological testing (Anton Paar MCR102)
- Color and appearance measurement (BYK MAC I, wavescan)
- DataPaq (oven cure mapping for production flash, dehydration, and bake)
- Filmbuild (spray pattern and process)





Products available for your use

EcoSupply P

Special color paint supply system with pigging technology:
Flexible. Modular. Efficient.

The **EcoSupply P** system offers fast, economical, and residue-free supply of a wide range of paint colors, making it ideal for special and small-batch applications.

- Pigging system allows usage of a special color without wasting material and solvent
- Modular paint and pig system that is customizable to fit specific needs

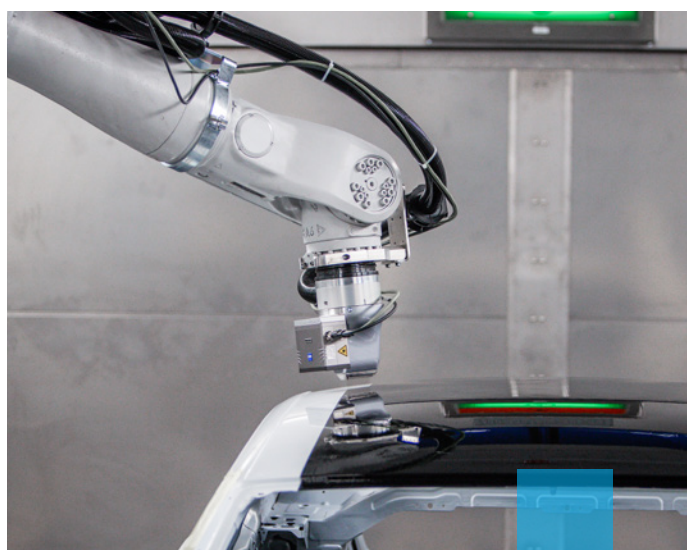
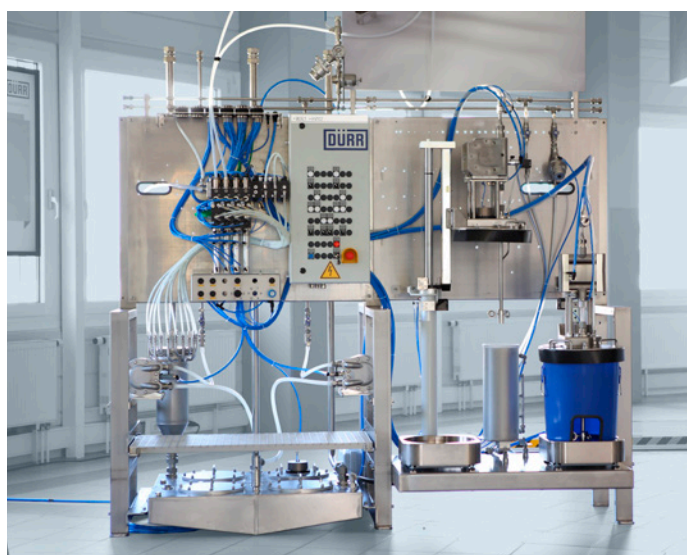
EcoPaintJet Pro

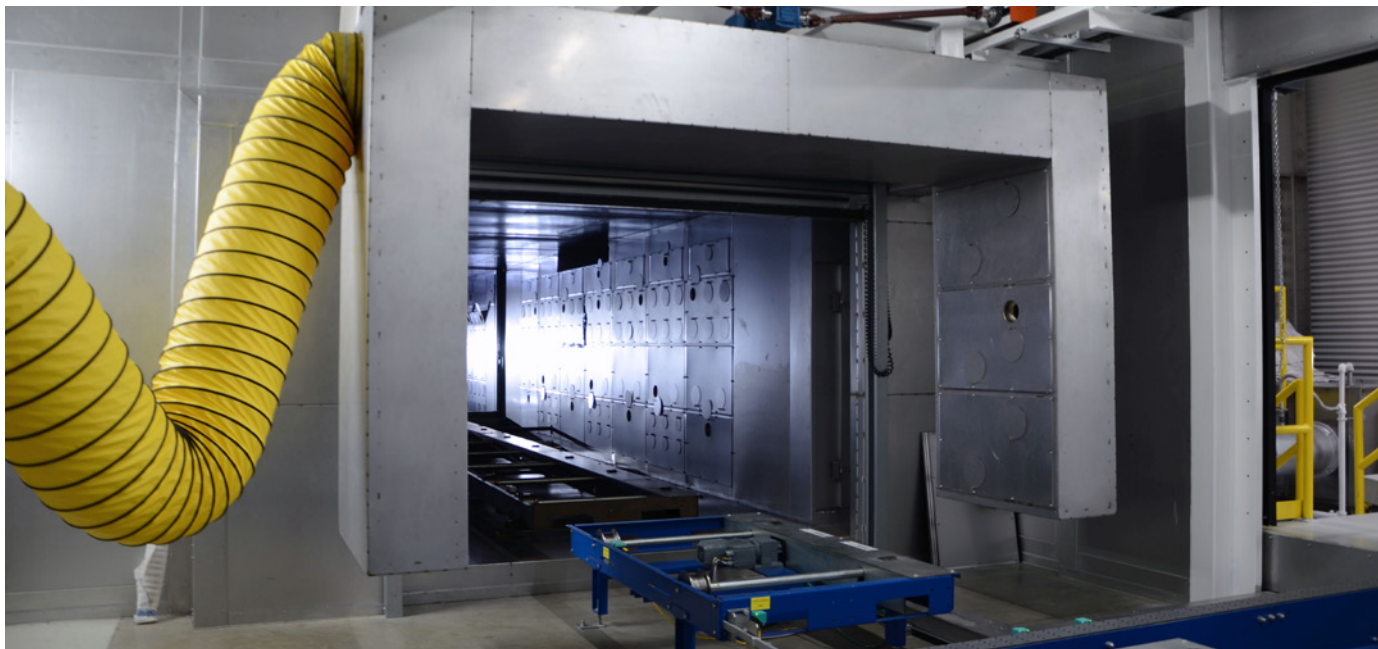
The latest **EcoPaintJet Pro** allows individual control of each nozzle hole, enabling precise, customizable coatings on vertical surfaces, roof arches, and door panels, even allowing patterns without the need for wraps.

- Highly accurate and sharply defined paint application
- Body masking no longer necessary
- Two-tone paint time reduced by eliminating the need for labor-intensive masking process
- Automated production to meet customer-specific requirements

Testing offered:

- New material development testing using XYZ table
- Two Tone application
- Graphics design
- Integrated process with basecoat painting prior to décor coat application
- Application on car body or individual parts with baking





HTE PAINT APPLICATORS

The High Transfer Efficiency (HTE) process family reduces paint losses by increasing transfer efficiency through an advanced atomizer system.

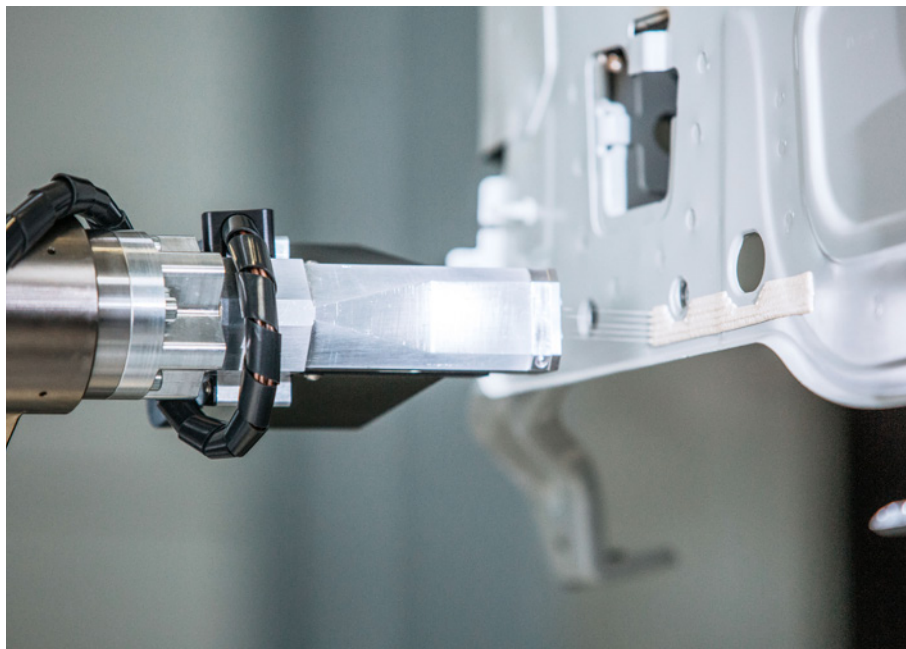
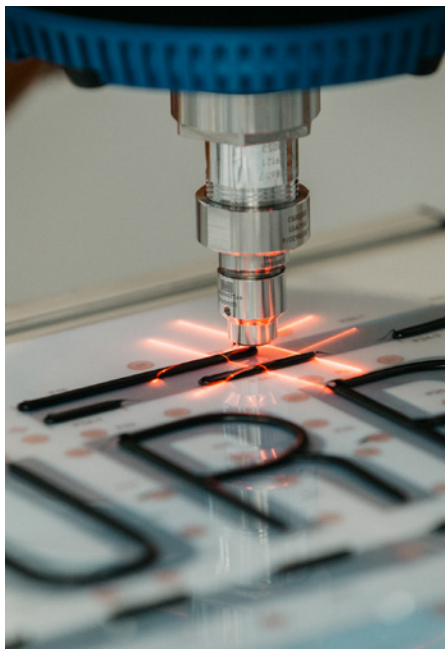
- Reduced paint losses and VOC emissions
- Less pollution of cabin and burden of (dry) scrubber
- Reduced compressed air consumption

OVENS

Dürr's latest oven generation, refined over decades, offers high flexibility and proven process performance, making it a market staple.

- Customizable oven to match layout of customer oven
- Full size oven allows for vehicle bake testing of substrate/insert for strength hardening and paint/sealer material cure times
- 2 stage oven allowing for flexible recipe setup to duplicate ramp and hold temperatures
- Proven product performance and flexibility





Dürr's Southfield, MI test center — more than just paint, let us help you test and validate your gluing and sealing processes.



GLUING

- Adhesive, sealer, and TIM equipment for body in white, general assembly, and battery manufacturing
- All equipment by Dürr
 - Material supply – **EcoRAM** 60 & 200
 - Metering – **EcoShotMeter** 150/300/600 or endless dosing with dosing pump
 - All kinds of specialized applicators
 - Control unit **EcoHVMP4**
- For all kinds of processes
 - Gap filler
 - TIM (Thermal Interface Material)
 - TCA (Thermal Conductive Adhesive)
 - Fire protection materials
 - Potting
 - Lid sealing
 - Foaming
 - Structural adhesives

SEALING

- Next step in full automation of sealing application: **EcoSealJet Pro**
- Be more efficient with **EcoJet ST** and **SE** for your underbody application
- Avoid manual masking and demasking with **EcoJet AirClean**
- Auto skiving closing the last step of sealing automation

LEADING IN PRODUCTION EFFICIENCY



Subject to change. The information in this brochure contains only general descriptions or performance characteristics which may vary in actual cases. The requested performance parameters shall be binding only if they are explicitly agreed within the sales contract. © Dürr 2024



Dürr Systems, Inc.

Application Test Center
26801 Northwestern Highway
Southfield, MI 48033

Tom Bucknell

Phone: +1 248 450-2067

Email: Tom.Bucknell@durrusa.com

www.durr.com