

LEADING IN
PRODUCTION
EFFICIENCY

A photograph of a DÜRR EcoDose 2K paint system. The system is a tall, stainless steel cabinet with a control panel at the top featuring a small screen and a red emergency stop button. Below the cabinet is a complex assembly of pipes, valves, and spray guns on a white frame. The background is a dark grey wall.

Integrated products into a painting system (incl. PaintSupply, dosing)

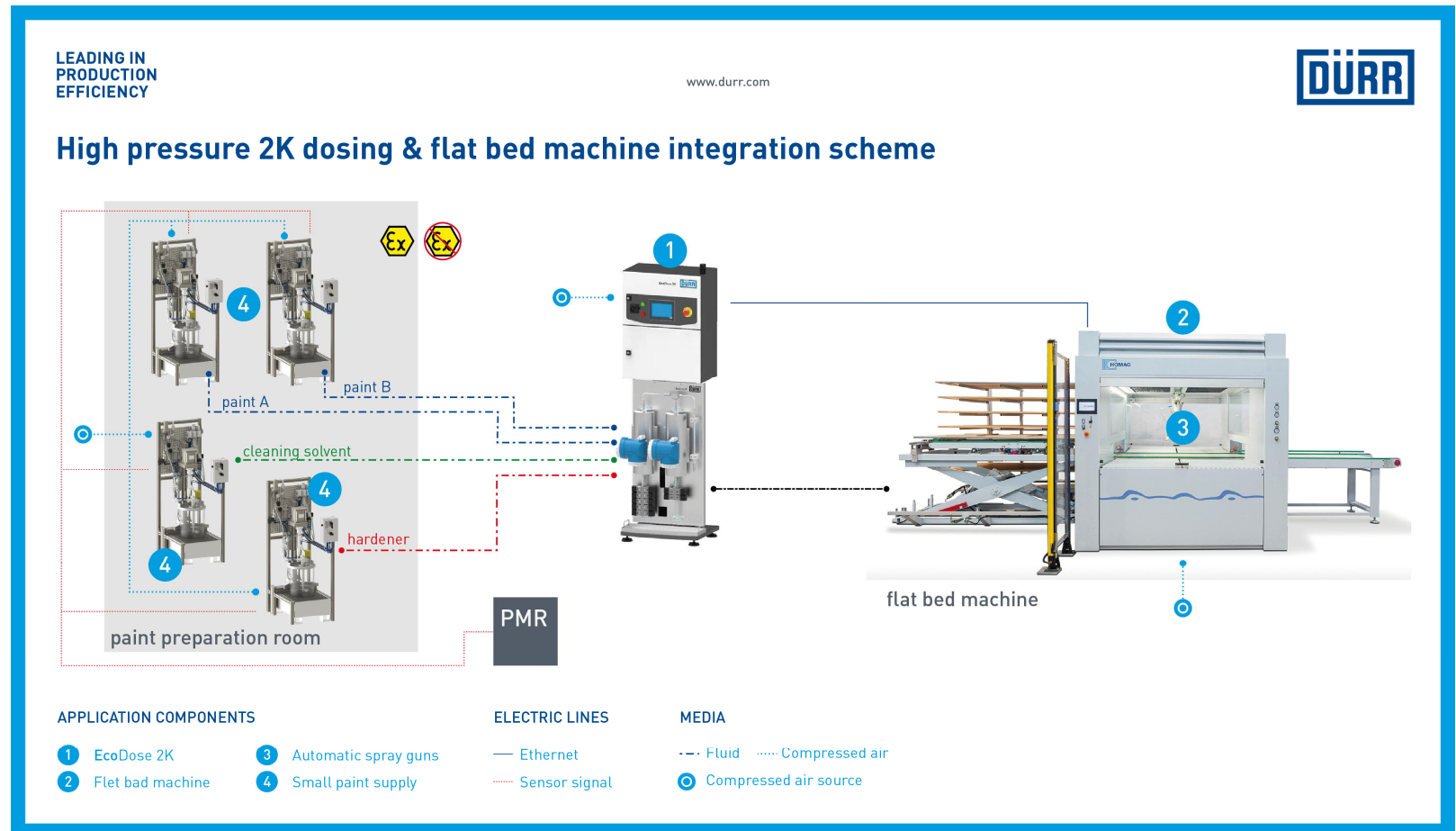
October 24.2019
Bietigheim-Bissingen

Timo Eglauer

Concept ready2integrate

Scope of Integrator

- Configuration of the equipment inside Web Shop
- Order material
- Installation
- Commissioning
- Training



Technical features

EcoDose 2K



- 3 separate sections: electrical, pneumatic and fluidic
- For solvent and water-borne components
- Low pressure (20 bar) or high pressure (200 bar)
- Gear flow meters or Coriolis flow meters
- For manual spray gun or automatic spray gun
- Automatic Dürr color change modular valves
- Continuous control of flow for each component
- 2 independent flushing circuits for component A and B
- Dosing precision < +/- 2%
- Mixing ratio 1:0 to 30:1 (1K and 2K possible)
- Working principle based on D.I.T. (Direct Injection Technology) for channel A and B with 1-2 ml per cycle
- Up to 10 colors and 3 catalysts



Technical features

EcoDose 3K



- 3 independent flushing circuits for component A, B, and C
- Mixing ratio 1:0:0 to 30:1:1 (1K, 2K and 3K possible)
- Working principle based on D.I.T (Direct Injection Technology) for channel A,B,C with 1-2 ml per cycle
- Up to 10 colors, 3 catalysts and 3 thinners



Industry 4.0



- **Included in standard configuration**, Ethernet UDP remote screen to any pc, PLC, etc.
- Preparation of process data from EcoDose on the internal interface

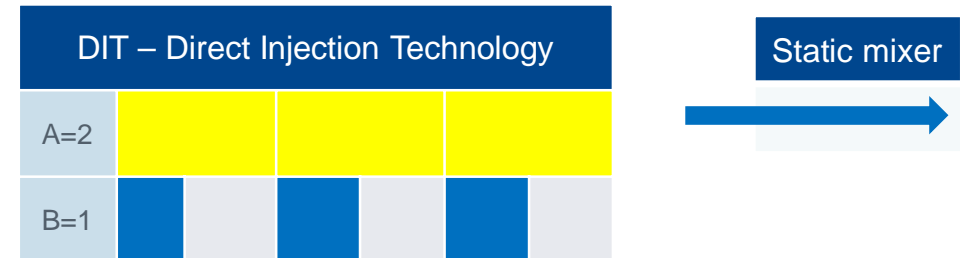
- Standard option available for wifi router to connect any device (smartphone, tablet, pc, ...)
- Complete remote control (as per vnc)
- **Possibility of remote assistance and service**



Benchmark Dürr EcoDose



1. DIT – Direct Injection Technology – dosing precision
2. Closed Loop Flow Control
3. Continuous flow control of each component in cc
4. Pot-Life control and monitoring
5. High-Quality components from Dürr automotive sector
6. Different measuring devices for the flow rate (Coriolis or Gear Cell)
7. Fluid panel easy designed (good maintenance)
8. Separate fluid board possible
9. High variance in our standard configurator
10. Dürr Service worldwide available 24/7



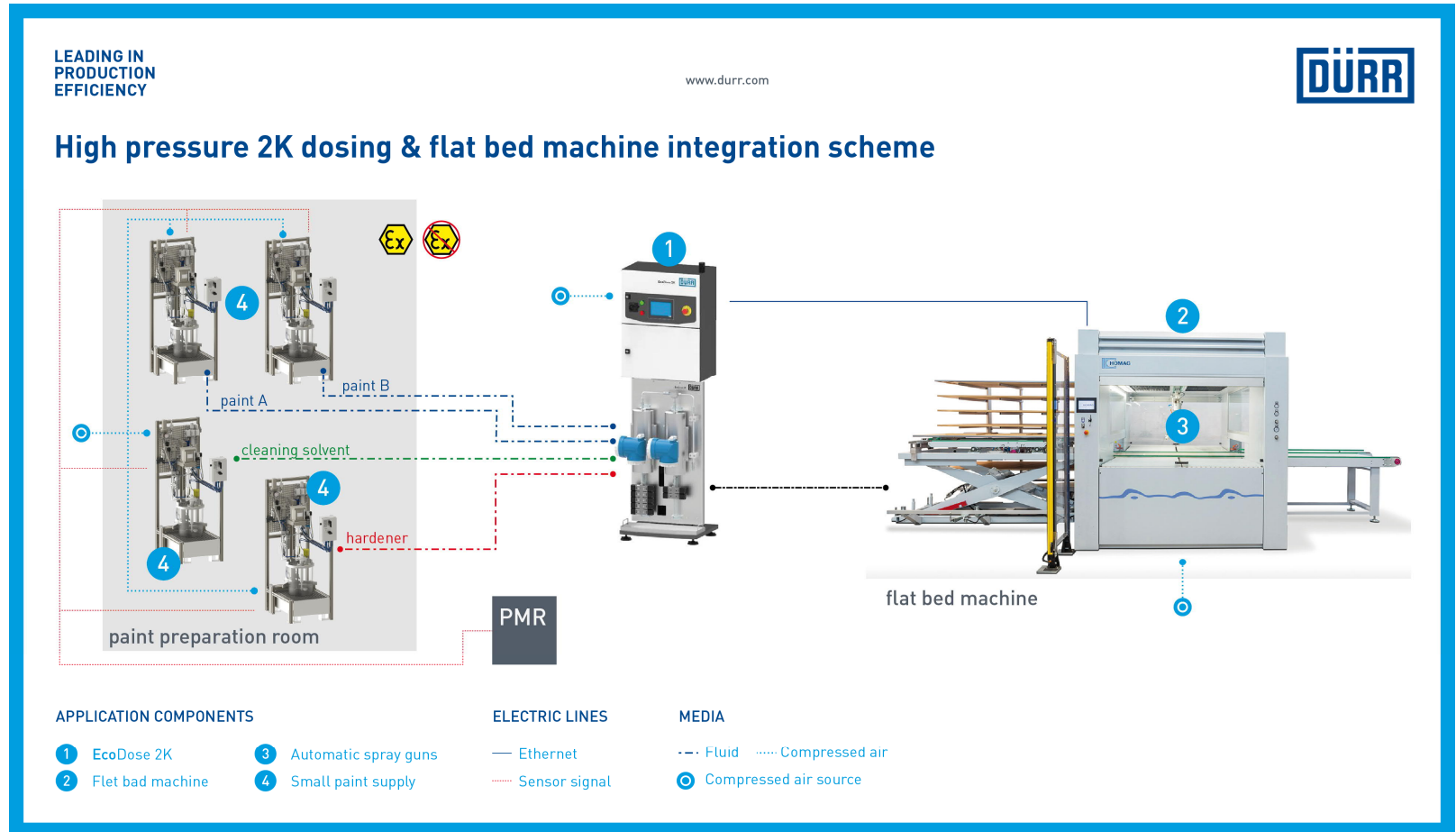
Live Demo

General functions on HMI
EcoDose2K

Concept ready2integrate

Scope of Integrator

- Configuration of the equipment inside Web Shop
- Order Material
- Implement Dürr equipment in external control
- Installation
- Commissioning
- Training



External recipe mode



In external recipe mode control commands are sent from a master controller.

Through the interface the following functions could be externally controlled:

- Selecting recipe dataset
- Switching the station (on/off)
- Starting individual cycle programs (load, purge and long purge)
- Change the recipe in use (color change)
- Synchronizing date and time



External recipe mode



Recycling icon | User level: 3 | UK flag | 01/12/2016 11:00:48 | DÜRR

Select language
EN

Password [*****]
User level 3

HH:MM:SS 11 00 48
yyyy/mm/dd 2016 01 12

IP address IF2 con. display 10.150.220.249
IP address IF3 network 192.168.102.100

USB functions
save recipes to USB device

CPU temperature ---
Version EcoDose2K_1.0.1

Navigation icons: Wrench, Elephant, Hourglass, Book, Funnel, Gears, Tap, Warning, Signal, Reset

External recipe mode



	User level: 3		10/19/2018 15:00:36		
	INPUTS			OUTPUTS	
	Start purge	<input type="checkbox"/> New recipe number	<input type="text" value="0"/>	Purge run	<input type="checkbox"/> Ack. start consumption
	Start load	<input type="checkbox"/> Set atom. air G1	<input type="text" value="0"/>	Load run	<input type="checkbox"/> Pot life alarm
	Start long purge	<input type="checkbox"/> Set atom. air G2	<input type="text" value="0"/>	Long purge run	<input checked="" type="checkbox"/> Potlife warning
	Strobe new recipe	<input type="checkbox"/> Set color. press. G1	<input type="text" value="0"/>	Purge necessary	<input type="checkbox"/> Color change state
	Main needle G1 act.	<input type="checkbox"/> Set color. press. G2	<input type="text" value="0"/>	Load necessary	<input type="checkbox"/> Actual loaded rec.
	Main needle G2 act.	<input type="checkbox"/> Set color flow G1	<input type="text" value="0"/>	Release purge	<input type="checkbox"/> Atom. air press. G1
	Abort act. time prog.	<input type="checkbox"/> Ack. teleg. counter	<input type="text" value="0"/>	Release load	<input type="checkbox"/> Atom. air press. G2
	Switching on rel.	<input checked="" type="checkbox"/> Year	<input type="text" value="3"/>	Ack. strobe new recipe	<input type="checkbox"/> Color press. G1
	Set date and time	<input checked="" type="checkbox"/> Month	<input type="text" value="0"/>	G1 active	<input checked="" type="checkbox"/> Color press. G2
	Start consumption	<input type="checkbox"/> Day	<input type="text" value="0"/>	G2 active	<input checked="" type="checkbox"/> Color flow
		Hours	<input type="text" value="0"/>	G1 in position	<input checked="" type="checkbox"/> Consumption A
		Minutes	<input type="text" value="0"/>	G2 in position	<input checked="" type="checkbox"/> Consumption B
		Seconds	<input type="text" value="0"/>	Station ready	<input type="checkbox"/> Telegram counter
				Station in ext. ctr. mode	
				Global fault station	
				Global warning station	
				Ack. set time	

Signal exchange



INPUT FROM EXTERNAL CONTROLLER				OUTPUT TO EXTERNAL CONTROLLER			
0.0	iAckTelCount	INT	Acknowledge telegram counter => Ext	0.0	iTelCount	INT	Telegram Counter. It has to be copied to AckTelCounter on the remote controller
2.0	iDateYear	INT	Date year => Ext	2.0	iAlarmGrplfoGlb1	INT	Alarm group information byte 0/1 (global alarm)
4.0	bDateMonth	BYTE	Date month => Ext	4.0	iAlarmGrplfoGlb2	INT	Alarm group information byte 2/3 (global alarm)
5.0	bDateDay	BYTE	Date day => Ext	6.0	iAlarmGrplfoApl1	INT	Alarm group information byte 0/1 (application specific alarm)
6.0	bTimeHours	BYTE	Time hours => Ext	8.0	iAlarmGrplfoApl2	INT	Alarm group information byte 2/3 (application specific alarm)
7.0	bTimeMinutes	BYTE	Time minutes => Ext	10.0	iSpare_10	INT	
8.0	bTimeSeconds	BYTE	Time seconds => Ext	12.0	iSpare_12	INT	
9.0	iSpareO_9	BYTE		14.0	iSpare_14	INT	
10.0	iSpareO_10	INT		16.0	iSpare_16	INT	
12.0	iSpareO_12	INT		18.0	iSpare_18	INT	
14.0	iSpareO_14	INT		20.0	mSatatOn	BOOL	Station On
16.0	iSpareO_16	INT					
18.0	iSpareO_18	INT					
20.0	mrelStOn	BOOL	Release switch on EcoDose2K from main station				

Description signal exchange



Example: recipe selection from 1 to 100

iActLoadedRecipe: number of loaded recipe

iColorChangeState: Status color changers
 0 = undefined, 1 = purged,
 2 = color loaded.

iNoNewRecipe: Number of new requested recipe

mStrobeNewRecipe: Recipe selection request

mAckStrNewrecipe: Acknowledge new recipe request

mPurgeNecessary: purge necessary for new recipe information

mReleasePurge: start release color changer purge

mReleaseLoad: Enable start "color change load" only if changer color status is pending purged.

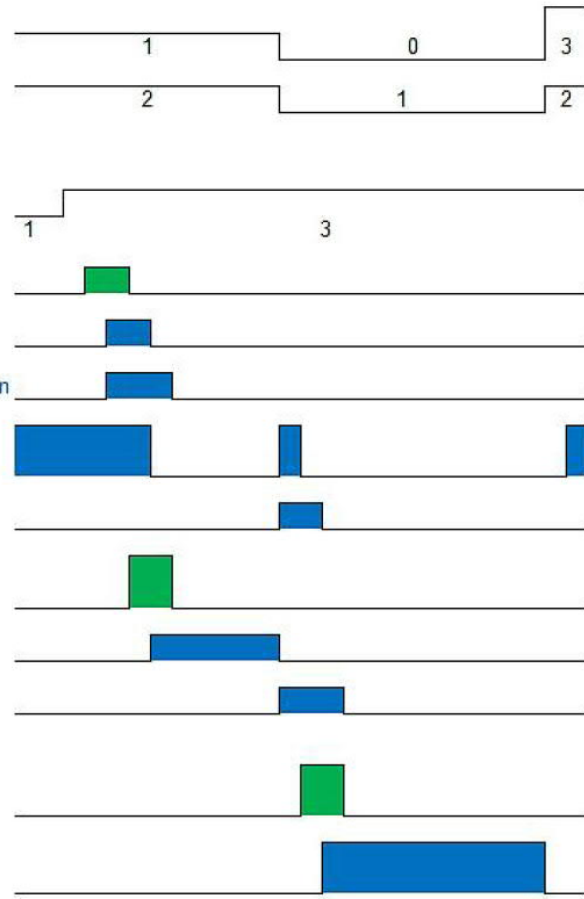
mStartPurge: time program "color change purge" start

mPurgeRun:

mLoadNecessary : Load color necessary after new recipe information (purged with color change status)

mStartLoad: Time program "color change load" start

mLoadRun: Time program "color change load" active



Live Demo

Small Supply System

Dürr Integratorsday 2019

24.10.2019 in Bietigheim-Bissingen

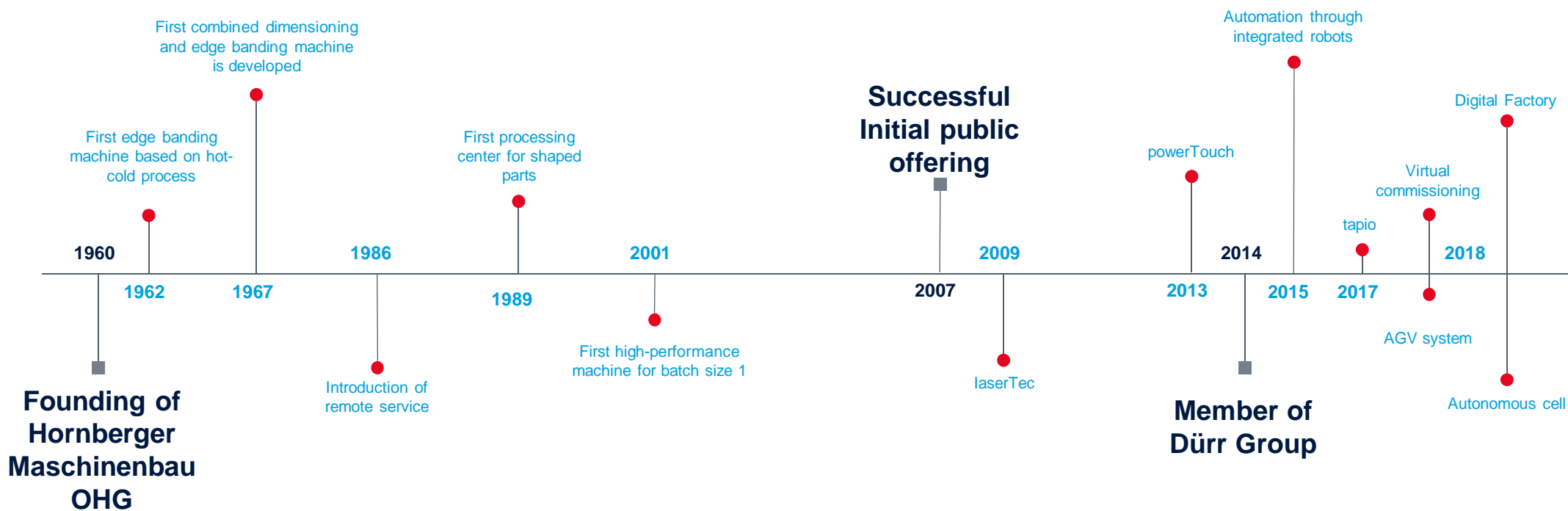
HE HOMAG

HE HOMAG

YOUR SOLUTION

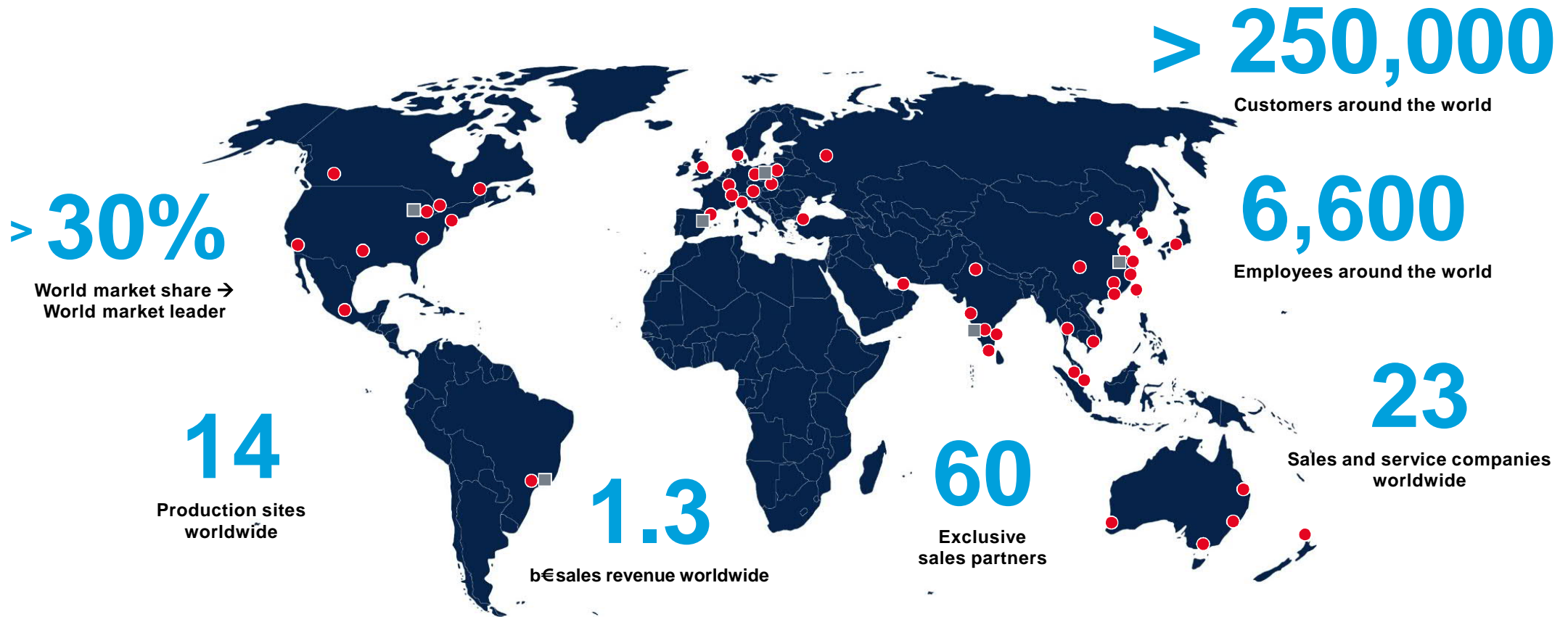
A success story

Development and innovations



Global Player

Our production, sales and service network



Living begins with our machines

Our business model

HOMAG Group is the world's leading provider of integrated solutions for production in the woodworking industry and woodworking shops.

**Furniture manufacturing
(85%)**



**Building components
(12%)**



**Timber frame
buildings (3%)**



Everything from a single source

Our technology portfolio



HOMAG integrates the complete process chain of woodworking.
 This means for our customers – Long-term success through precision, innovation and process competence.






Unser Oberflächen-Produkt-Portfolio

The Full-blown Surface Product Portfolio

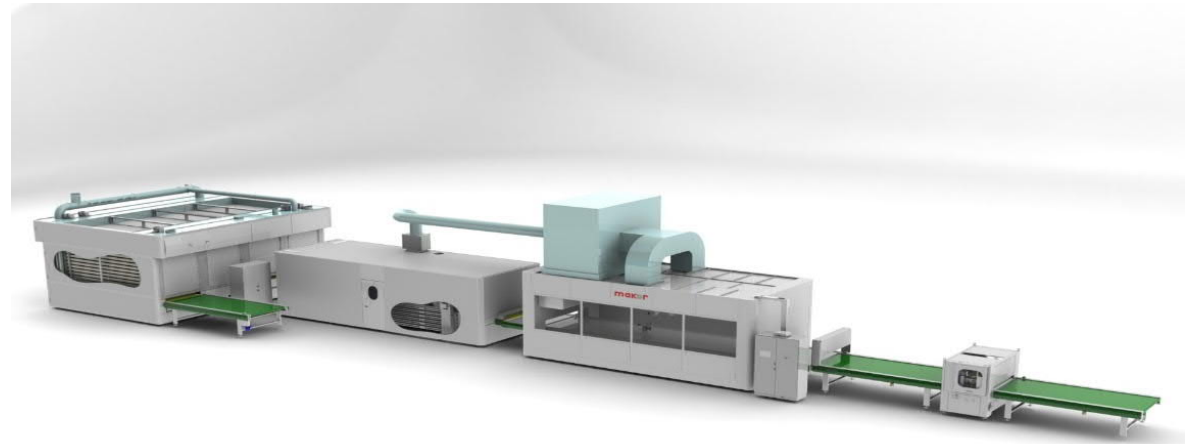
Plattenförmige Werkstücke / Panel Processing

SCHLEIFEN / SANDING	Breitbandschleifen von oben / Wide Belt Sanders Top		Lackauftragen / Coating		Flachkaschieren / Flat Laminating	
	 IE HOMAG SANDTEQ W-100 Der perfekte Einstieg/ The perfect entry machine	 IE HOMAG SANDTEQ W-200 Bis zu 2 Aggregate/ Up to 2 aggregates	 IE HOMAG SPRAYTEQ S-100 1 Spritzarm/1 spray arm	 mak3p 2 Spritzarme/ 2 spray arms	 SPINNEFEN Folie/Foil	 IE HOMAG LAMTEQ F-200 Blattware und Folie/ Sheetware and Foil
	 IE HOMAG SANDTEQ W-300 Bis zu 4 Aggregate/ Up to 4 aggregates	 IE HOMAG SANDTEQ W-700 Bis zu 5 Aggregate/ Up to 5 aggregates	 mak3p Spritzen mit Roboterarm/ Coating with roboter arm	 mak3p Walzenauftrag/ Roller Coater	 IE HOMAG LAMTEQ F-200 Blattware und Handling/ Sheetware and Handling	 IE HOMAG LAMTEQ F-900 HighPerformance
	 IE HOMAG SANDTEQ W-900 Bis zu 5 Aggregate und SORB TECH Maschinenbett/ Up to 5 aggregates and SORB TECH machine bed		 mak3p Kantenlackieren/ Edge Coating		 SPINNEFEN Plattenummanteln / Panel Wrapping	
	Breitbandschleifen von oben/unten / Wide Belt Sanders from Top/Bottom		Trocknen / Ovens		 SPINNEFEN Finger-Pull	
	 IE HOMAG SANDTEQ B-700 Schleifline/Sanding Lines	 mak3p Kantenschleifen im Durchlauf/ Throughlead Edge Sanders	 mak3p UV-Trockner/ UV Drying Oven	 mak3p Konvektionstrockner - Tunnel/ Linear Convection Oven	 DIPA Digital Printing	

Profilierte Werkstücke / Profile Processing

HOBELN / MOULDING	Profilieren / Profiling		Imprägnieren / Impregnating		Vorbereitung Profilummanteln / Profile Wrapping Preparation	
	 IE HOMAG MOULDTEQ M-300 Bis zu 8 Spindeln/ Up to 8 spindles		 mak3p Imprägnieren/ Impregnating		 SPINNEFEN Fleece Applikation	
SCHLEIFEN / SANDING	Profilschleifen / Profile Sanders		Lackauftragen / Coating		Profilummanteln / Profile Wrapping	
	 mak3p Profilschleifen im Durchlauf/ Throughlead Profile Sanders		 mak3p Spritzlackieren/ Spraying		 SPINNEFEN Vakuumbeschichtung/ Vacuum Coating	
			 mak3p UV-Trockner/ UV Drying Oven		 mak3p Konvektionstrockner/ Convection Oven	
				 SPINNEFEN Furrerstreifen/Veneer Strips		
				 SPINNEFEN Folie/Foil		

HOMAG Product Range Coating



**ENTRY
LEVEL**



HOMAG
YOUR SOLUTION

**HIGH-END
SOLUTION**

SPRAYTEQ S-100

Product Portfolio



Typ	Autonomous cell, with automated workpiece handling	Vacuum conveyor belt covered with disposable paper
Ansicht		
Application technology	Single oscillating arm	
Type of feed	Reversing	Through feed
Transport	Work pieces on trays	Vacuum conveyor with disposable paper



DÜRR Application Technology

Standard for SPRAYTEQ S-100

DÜRR Pumps

EcoPump AD

EcoPump VP



DÜRR Guns

EcoGun
AL AUTO

EcoGun
AA AUTO

EcoGun
AS AUTO Pro



DÜRR Dosing

EcoDose 2K



SPRAYTEQ S-100

One last thing – The HOMAG Surface App Suite

Your “digital” Swiss Army Knife:

Your benefits:

- Digital multi-functional tools
- Simple, user-friendly
- Helps plant operators with everyday tasks
- No connection to the machine – suitable for all machine brands and ages

Free of Charge!



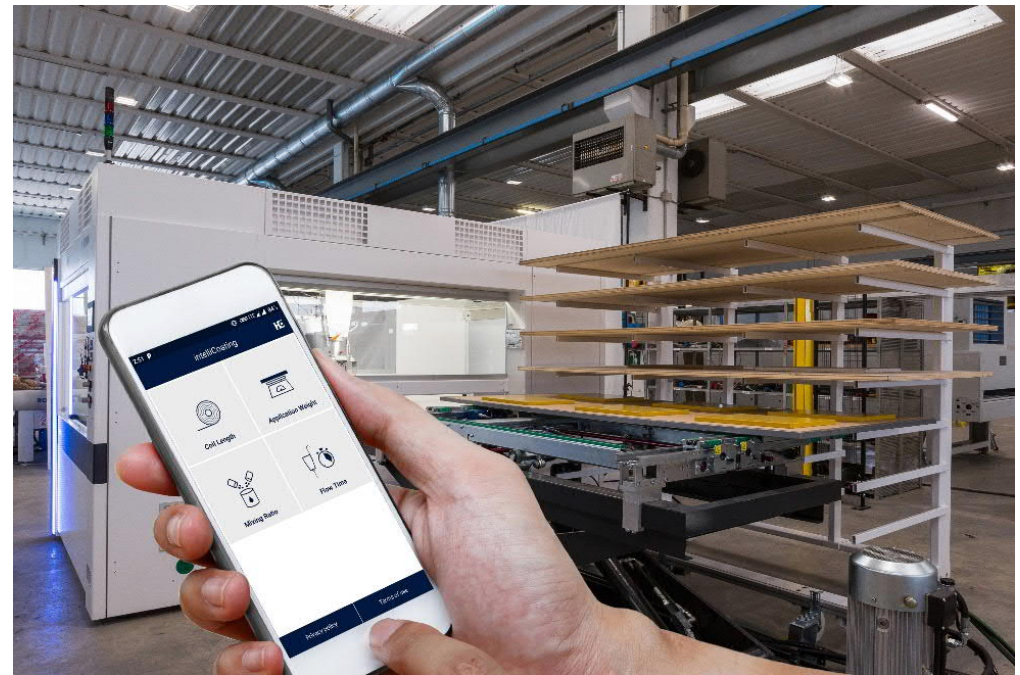
<https://www.homag.com/produktdetail/intellicoating-app/>



intelliCoating

Tools for more efficient work

- **Coil Length**
 - Calculation of the remaining running meters of the disposable paper roll
- **Application Weight**
 - Measurement of the applied quantity per m²
- **Mixing Ratio**
 - Determine the required quantities of each component of a mixed coating on the basis of a mixing ratio
- **Flow Time**
 - Measurement the viscosity of paints and varnishes according to DIN



LEADING IN
PRODUCTION
EFFICIENCY



October 24.2019
Bietigheim Bissingen
www.durr.com

Timo Eglauer

Station 1 - Integrated products into a painting system (incl. PaintSupply, dosing)

“Subject to change. The information in this presentation contains only general descriptions or performance characteristics, which may vary in different cases. The requested performance characteristics are only binding if they are expressly agreed in the contract.”

Dürr Systems AG
Carl-Benz-Straße 34
74321 Bietigheim-Bissingen
Germany

www.durr.com

