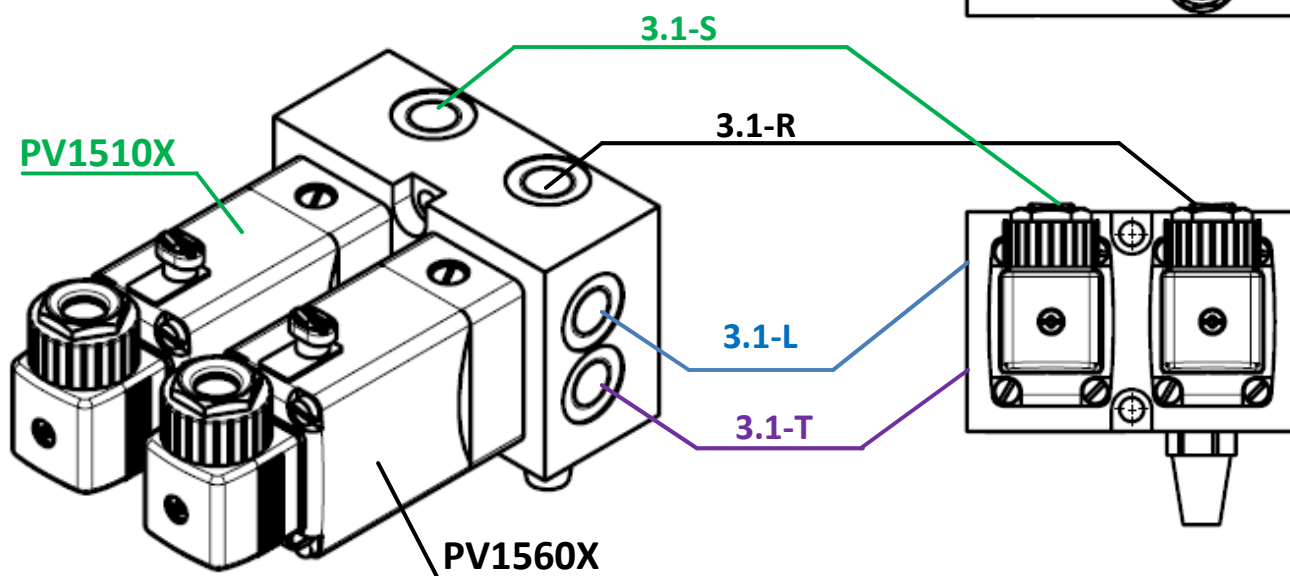
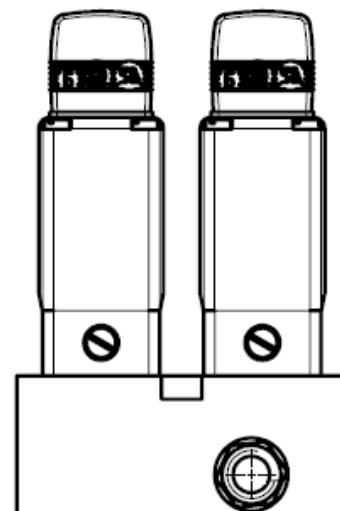
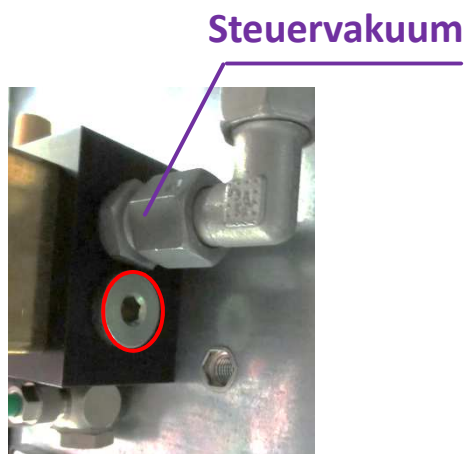
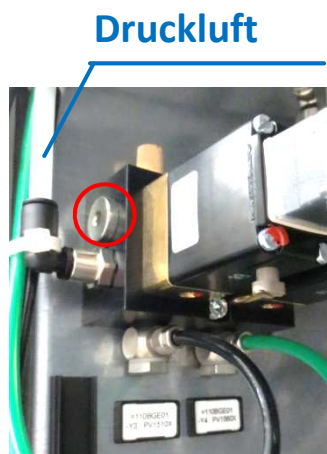
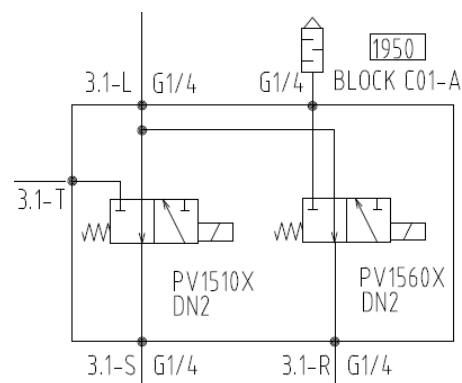


Montageinformation C01-A 331

Bestellnummer M0330411.03

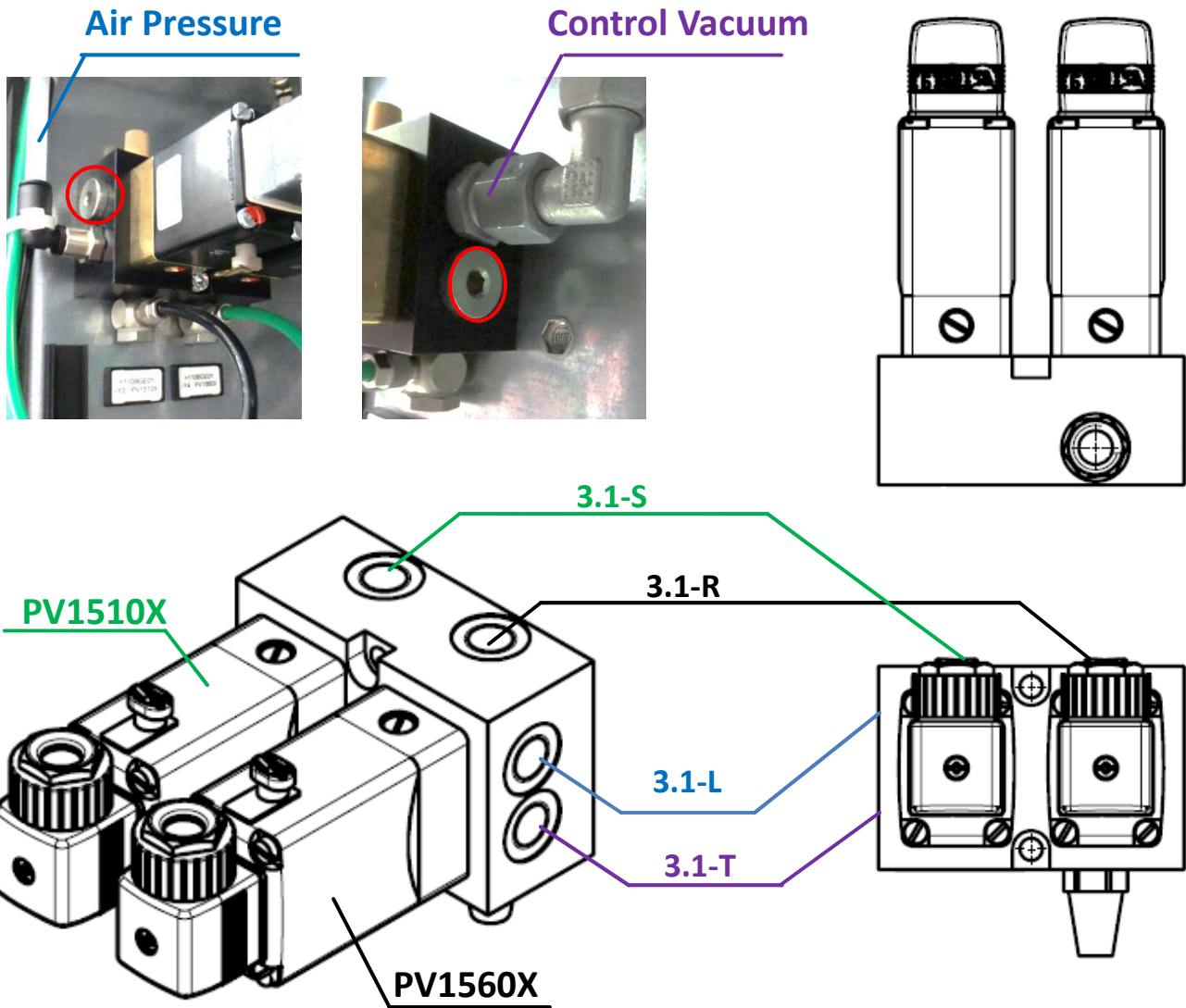


Kennung	Funktion
3.1-S	Adapter Füllventil
3.1-R	Adapter Vakuumventil
3.1-L	Anschluss Druckluft
3.1-T	Anschluss Steuervakuum
	2x ¼" Blindstopfen für 3.1 T/L



Assembly – Information C01-A 331

Order code M0330411.03



Label	Function
3.1-S	Adapter Filling Valve
3.1-R	Adapter Vacuum Valve
3.1-L	Connection Air Pressure
3.1-T	Connection Vacuum
	2x ¼" Blanking plug for 3.1 T/L

